

## BATTERY CHARGE / DISCHARGE / TEST BENCH

### 1 to 8 channels automatic cycling bench All Battery Types (Ni-Cd - Pb - Ni-Mh - Li-ion )- ....

#### LINEAR TECHNOLOGY

##### Main Characteristics

- 1 to 8 channels for charge / discharge
- Main powers available (Voltage and intensity in charge and discharge on each channel)
  - 50 Volts / 50 Amperes
  - 45 Volts / 65 Amperes
  - 50 Volts / 100 Amperes
  - 30 Volts / 10 Amperes
  - Further powers upon request
- Immediate or delayed test start.
- Control of voltages under 16 bits.
- Temperature Measurement with type K thermocouples.
- Alarm for electrolyte level.
- Cut at predefined voltages Min, Max or  $-\Delta V$ .
- Cut as a function of time – Protection against temperature defect.
- Set up of multiple cycles and / or sequences
- Printing and automatic filing of data at the end of the test.
- Protection –data and results saving and backup in case of power cut.
- Test result storage and research by user defined criteria.
- Chart drawing per phase.

##### Options :

- Individual element voltage measurement
- Deep discharge module
- Isolation test (Megohmmeter)
- Uninterrupted Power Supply



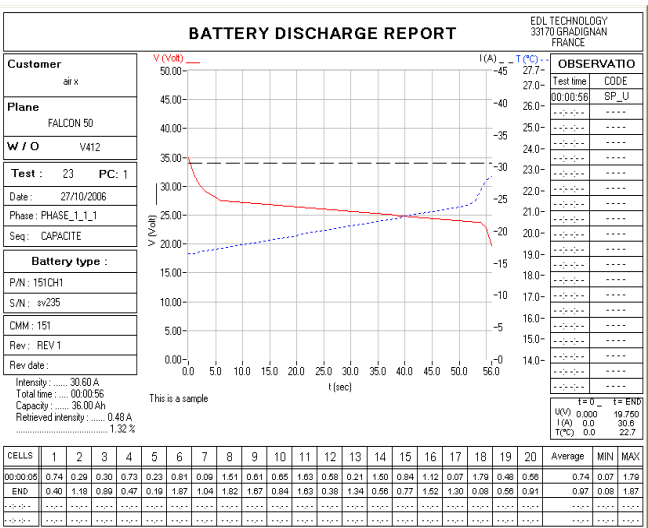
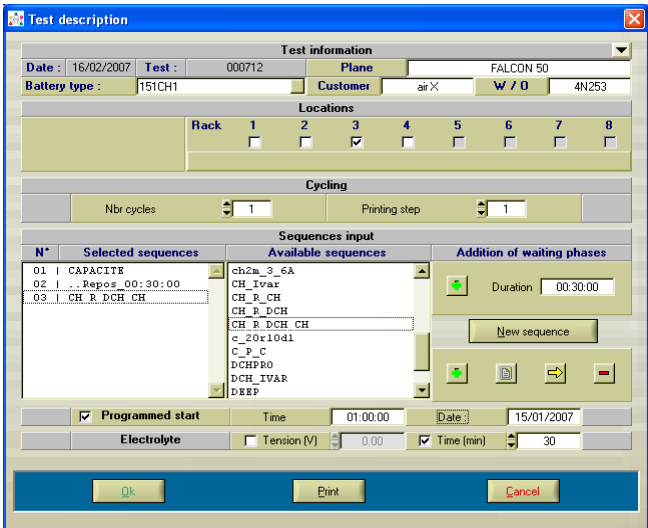
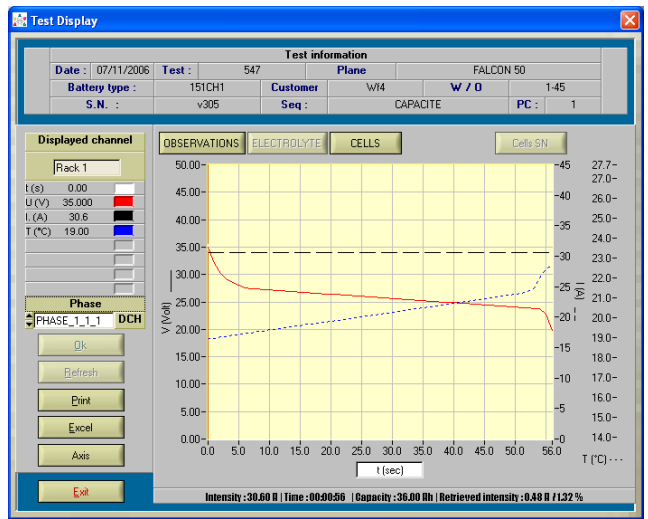
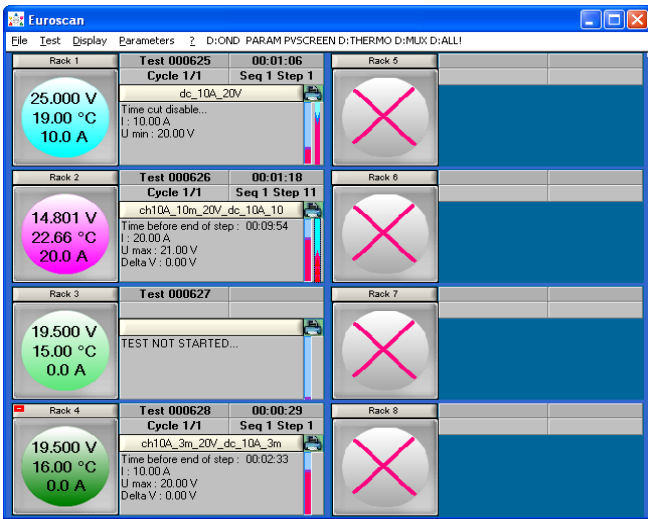
8 Channel automatic bench



2 Channel automatic bench

# EUROSCAN ONE TO EIGHT INDEPENDENT CHANNELS

## Main Screens and Test Report Print



## Options

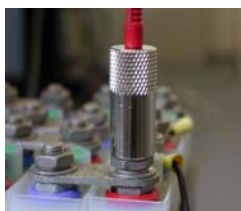
Connection systems :

for elements voltage  
measurement



or Sockets

and deep discharge



Isolation Tester : Megohmmeter

